

November 14, 2023  
Wetland Working Group

# Great Salt Lake Basin Integrated Plan

Laura Vernon  
Division of Water Resources



Become a partner, learn more  
[gslbasinplan.utah.gov](https://gslbasinplan.utah.gov) | [gslbasinplanning@utah.gov](mailto:gslbasinplanning@utah.gov)





# GREAT SALT LAKE ELEVATION

1986



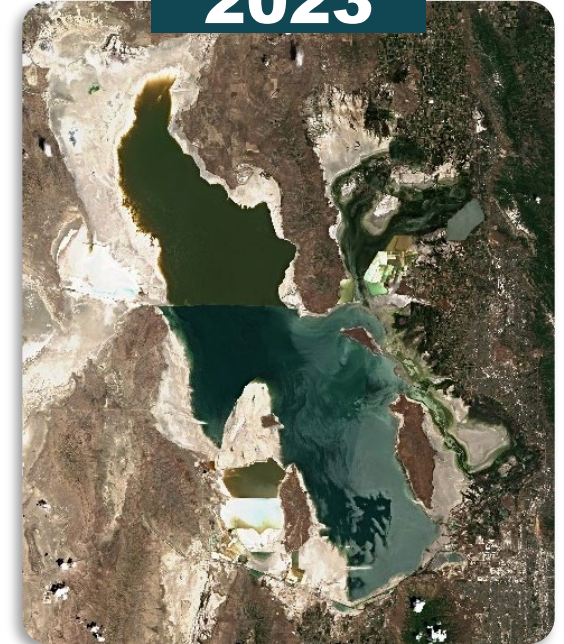
2000



2022



2023



RECORD HIGH

**4211.65 FEET**



AVERAGE

**4202.2 FEET**



RECORD LOW\*

**4188.5 FEET**

\*PROVISIONAL



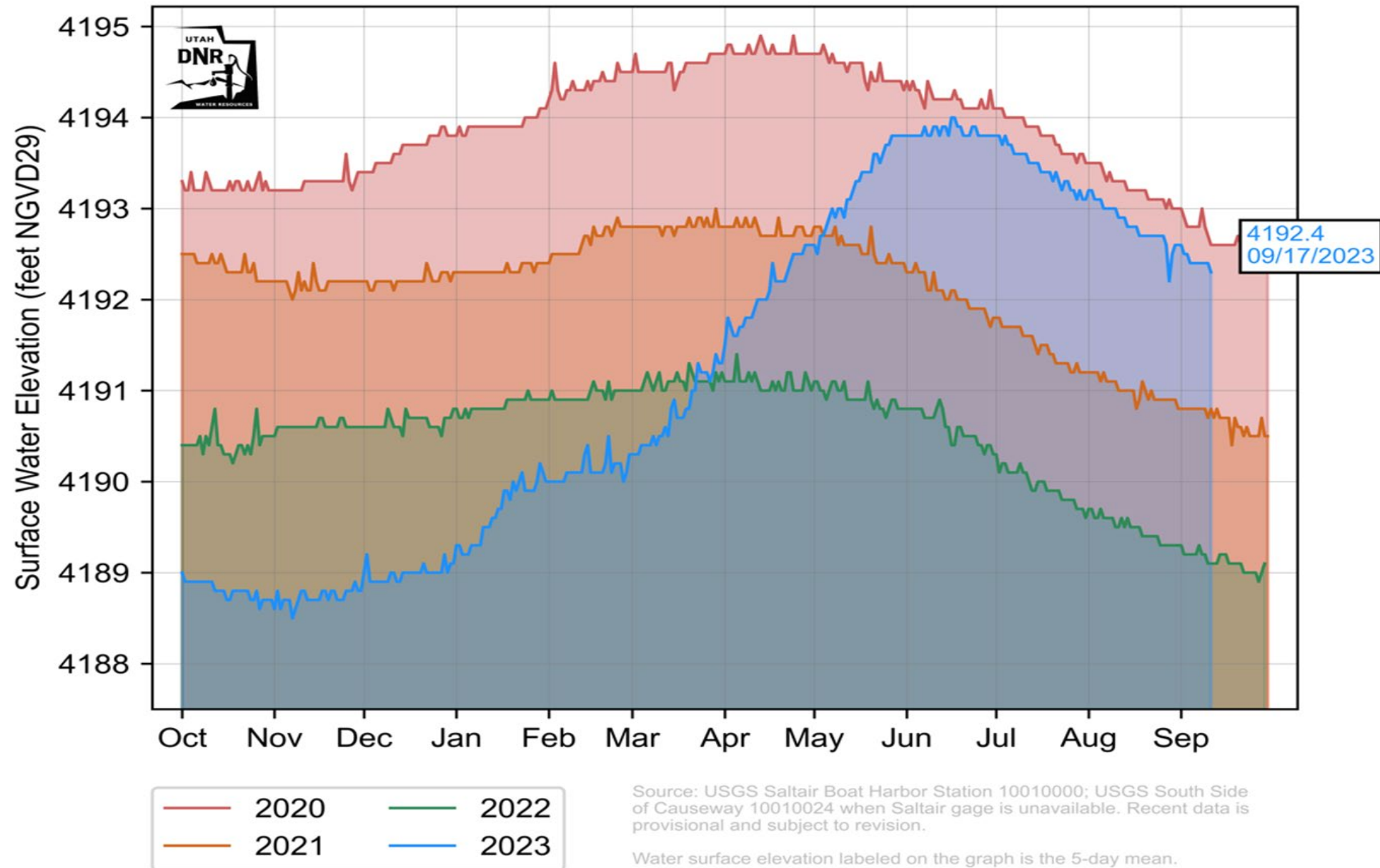
**4194.00 FEET**



Become a partner, learn more  
[gslbasinplan.utah.gov](https://gslbasinplan.utah.gov) | [gslbasinplanning@utah.gov](mailto:gslbasinplanning@utah.gov)



# Great Salt Lake South Arm Elevation





# Integrating Efforts

HB 429 Great Salt Lake  
Watershed Integrated Water Assessment  
(\$5M, Finish by Nov 2026)

U.S. Bureau of Reclamation  
WaterSmart Basin Study  
(\$3.1M Match)



“Identify and evaluate BMPs that may be used to provide a reliable water supply that:

- Meet water quality objectives
- Meet agricultural water objectives
- Accommodate anticipated growth and economic development
- Provide adequate flow to sustain GSL, GSL’s wetlands, and other ecological functions in GSL’s watershed”

**-HB429**

“Provide a thorough trade-off analysis to help decision-makers balance water supply and demand, and avoid deterioration of agriculture, industry, and ecosystems”

**- Reclamation Basin Study**



# The Challenge

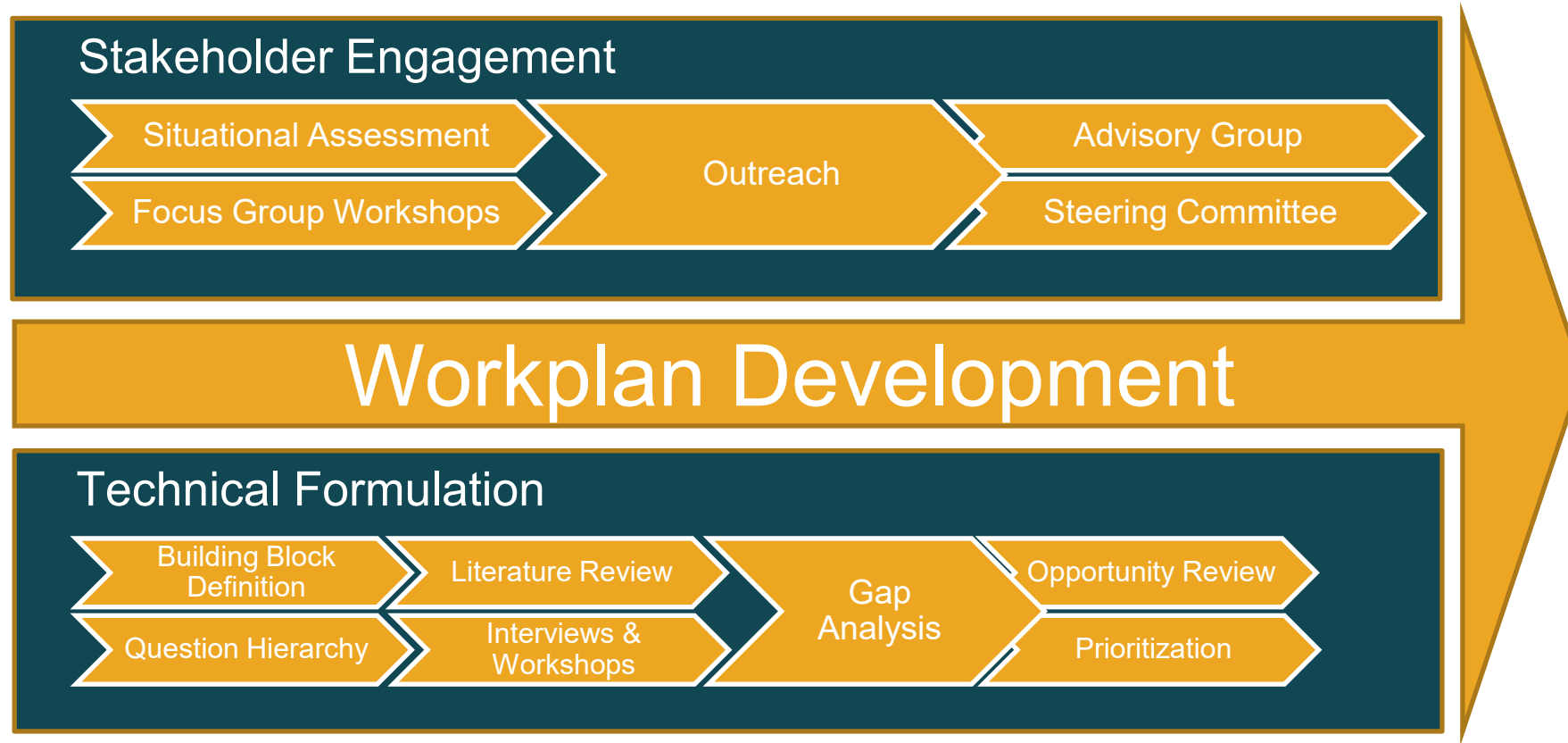
- Ensuring a resilient water supply requires extraordinary vision and collaborative effort. Solutions remain socially and technically complex as demands on this limited resource continue to increase.
- Today's water management decisions shape tomorrow's possibilities.



# An Integrated Approach to Work Plan Development



# Work Plan Development



## The Work Plan for the GSLBIP





# Our Goal

Ensure a resilient water supply for Great Salt Lake and all water uses, including people and the environment, throughout the watershed.





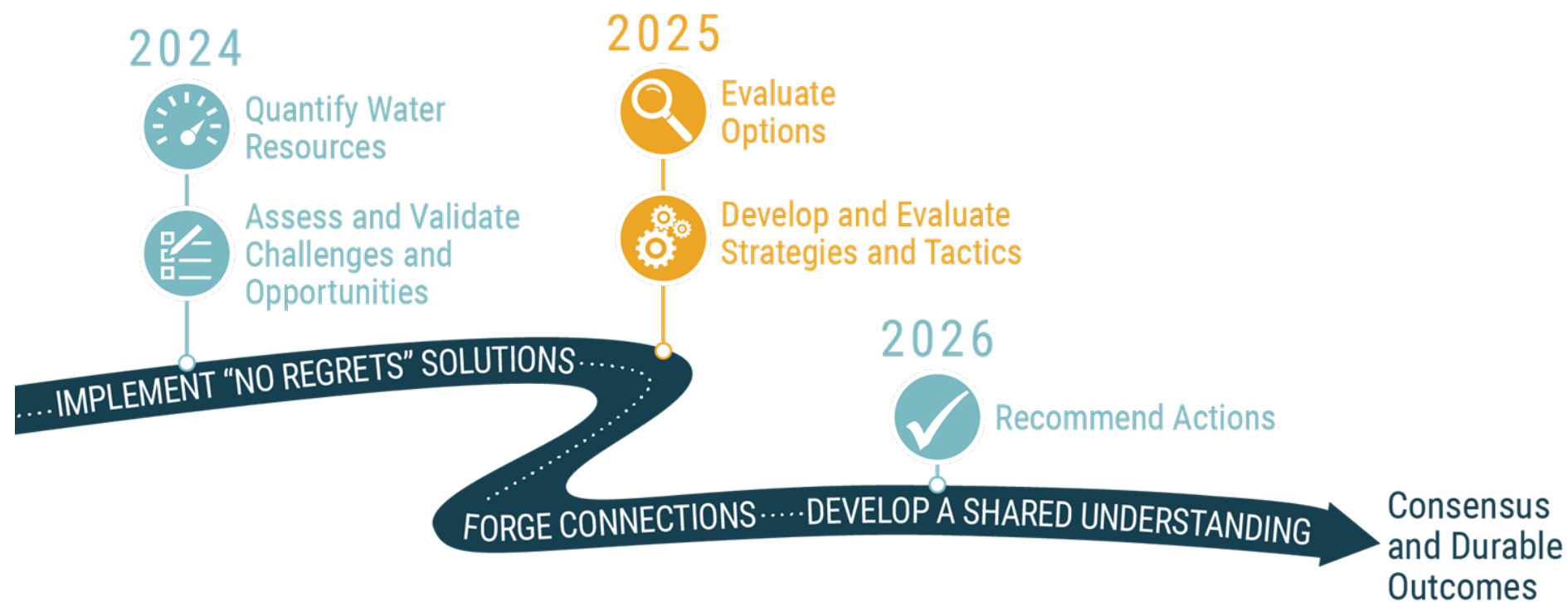


# Our Objectives

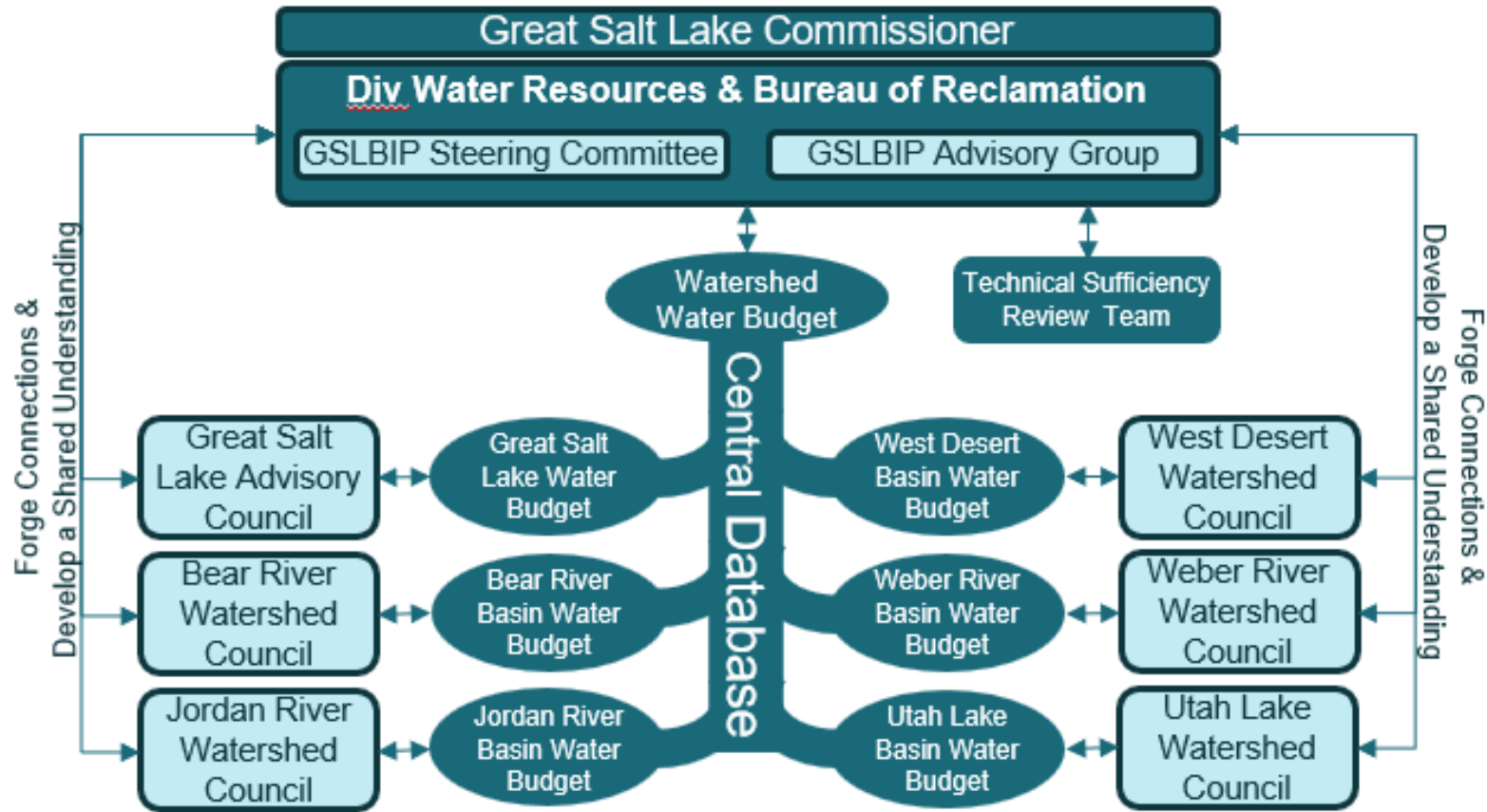
1. Forge connections
2. Develop a shared understanding
3. Quantify water resources
4. Evaluate options
5. Recommend actions

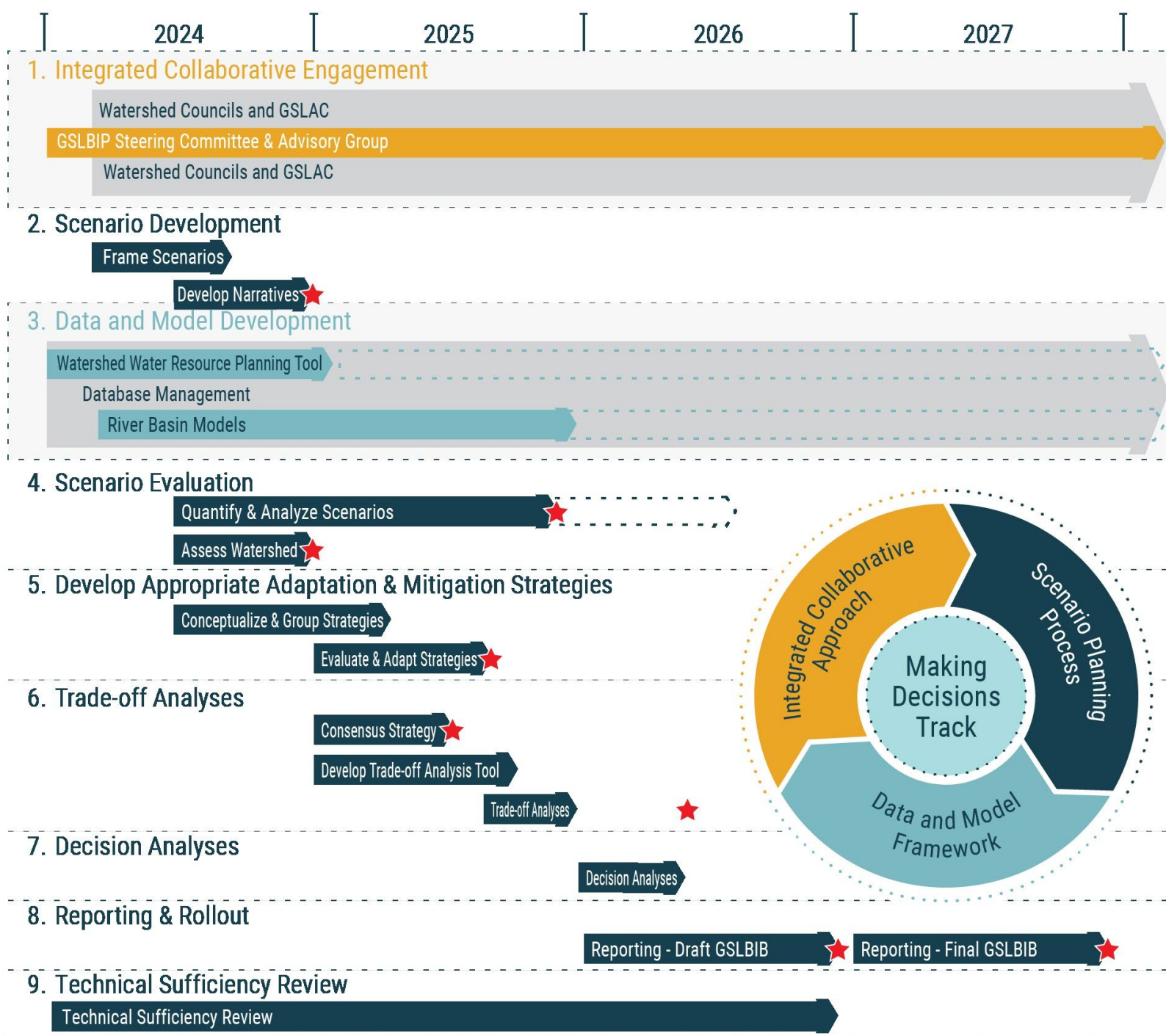


# An Integrated Approach



# An Integrated Collaborative Approach









# Workplan Rollout

- Mid-November release
- November 15 presentation to legislature
- December 7 open house
- 45 + day review period
- BIP work begins January 2024





# Integrating A Watershed Thinking One Water Acting as One Community







# THANK YOU



Become a partner, learn more  
[gsllbasinplan.utah.gov](http://gsllbasinplan.utah.gov) | [gsllbasinplanning@utah.gov](mailto:gsllbasinplanning@utah.gov)

