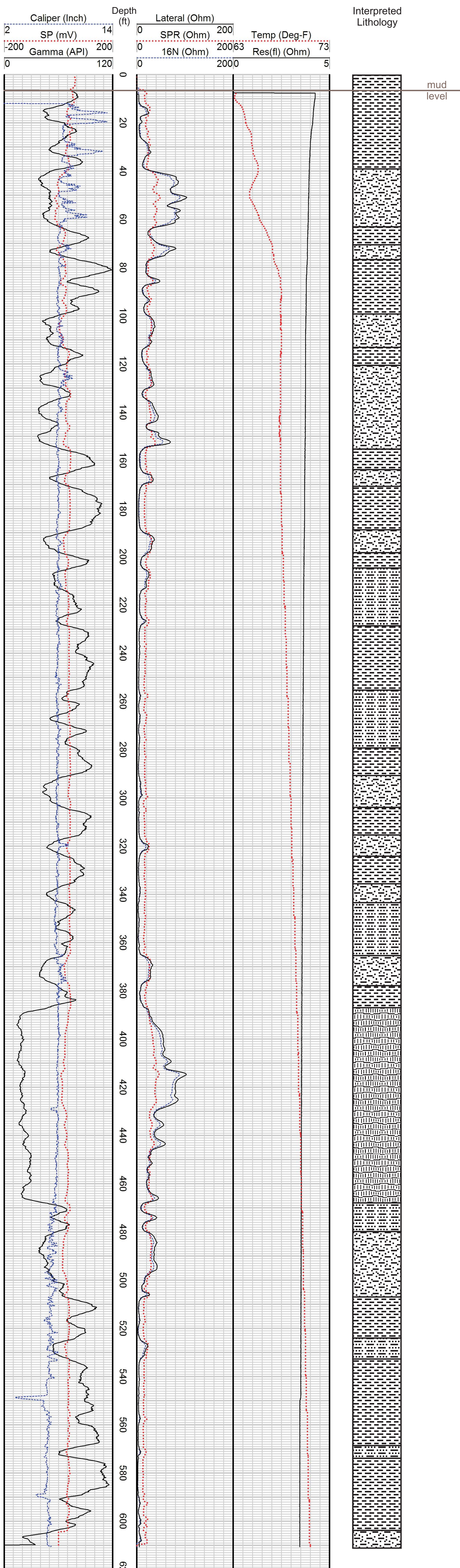




# Geophysical Well Log

Gamma and E-logs

DWRi #	1213004M00	WIN	436281	Ground Elevation	4343 ft
Owner	Utah Geological Survey			Log Measured from	Ground Level
Driller	USGS Western Research Drilling			Drilling Measured from	Ground Level
Location	Rozel Flats			Total Depth	610 ft
County	Box Elder	State	Utah	Depth to Water	N/A
				Drilling Fluid	Bentonite
Location (DWRi) N 500 ft, W 643 ft from S4 corner, Sec 04, T9N, R7W, SLBM				Casing Type   Dia.   From   To	
Location (GPS) UTM: X=362021m, Y= 4598906m, NAD83, Zone 12N N 483 ft, W 565 ft from E4 corner, Sec 04, T9N, R7W, SLBM					
Date	16 Nov 2012	Time	6:00 pm	Comments	
Geologist			Kevin Thomas	UGS Well Rozel-1	
				Additional Geophysical Logs Sonic Log	



- Clay
- Silty Sand
- Sandy Clay
- Basalt

Although this product represents the work of professional scientists, the Utah Department of Natural Resources, Utah Geological Survey makes no warranty, expressed or implied, regarding its suitability for a particular use. The Utah Department of Natural Resources, Utah Geological Survey, shall not be liable under any circumstances for any direct, indirect, special, incidental, or consequential damages with respect to claims by users of this product.