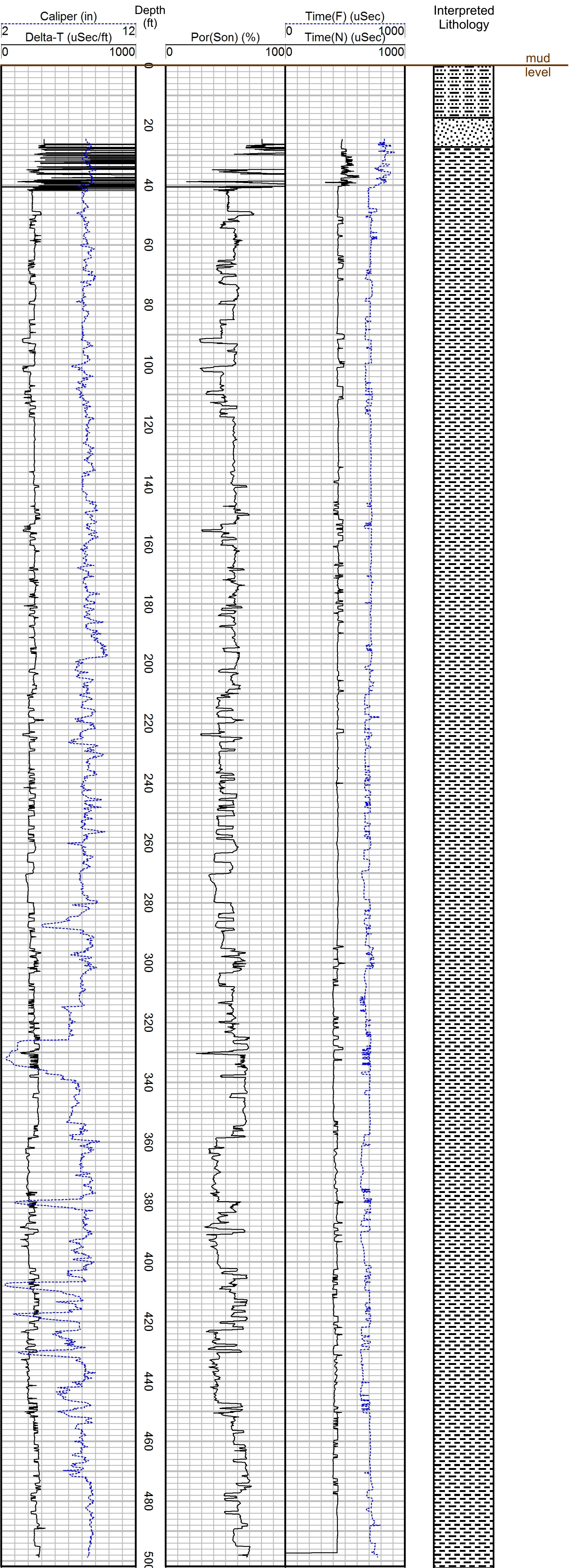




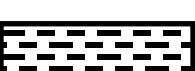


# Geophysical Well Log

## Gamma and E-logs

DWRi #	1171002M00	WIN	436085	Ground Elevation	4680 ft
Owner	Utah Geological Survey			Log Measured from	Ground Level
Driller	USGS Western Research Drilling			Drilling Measured from	Ground Level
Location	Near Pavant Butte			Total Depth	500 ft
County	Millard	State	Utah	Depth to Water	N/A
				Drilling Fluid	Bentonite
Location (DWRi) UTM: X= 346622m, Y= 4312192m NAD83 N 191 ft, W 1041 ft from E4 cor., Sec 32, T21S, R8W SLBM				Casing Type	
Location (GPS) UTM: X= 346622m, Y= 4312192m NAD83 N 191 ft, W 1041 ft from E4 cor., Sec 32, T21S, R8W SLBM				Uncased when logged	
Date	21 Aug 2012	Time	15:45	Comments	
Geologist	Kevin Thomas			UGS Well PA-6	
				Additional Geophysical Logs	
				Gamma and E-logs	



-  Sand
-  Sandy Clay
-  Clay

Although this product represents the work of professional scientists, the Utah Department of Natural Resources, Utah Geological Survey makes no warranty, expressed or implied, regarding its suitability for a particular use. The Utah Department of Natural Resources, Utah Geological Survey, shall not be liable under any circumstances for any direct, indirect, special, incidental, or consequential damages with respect to claims by users of this product.