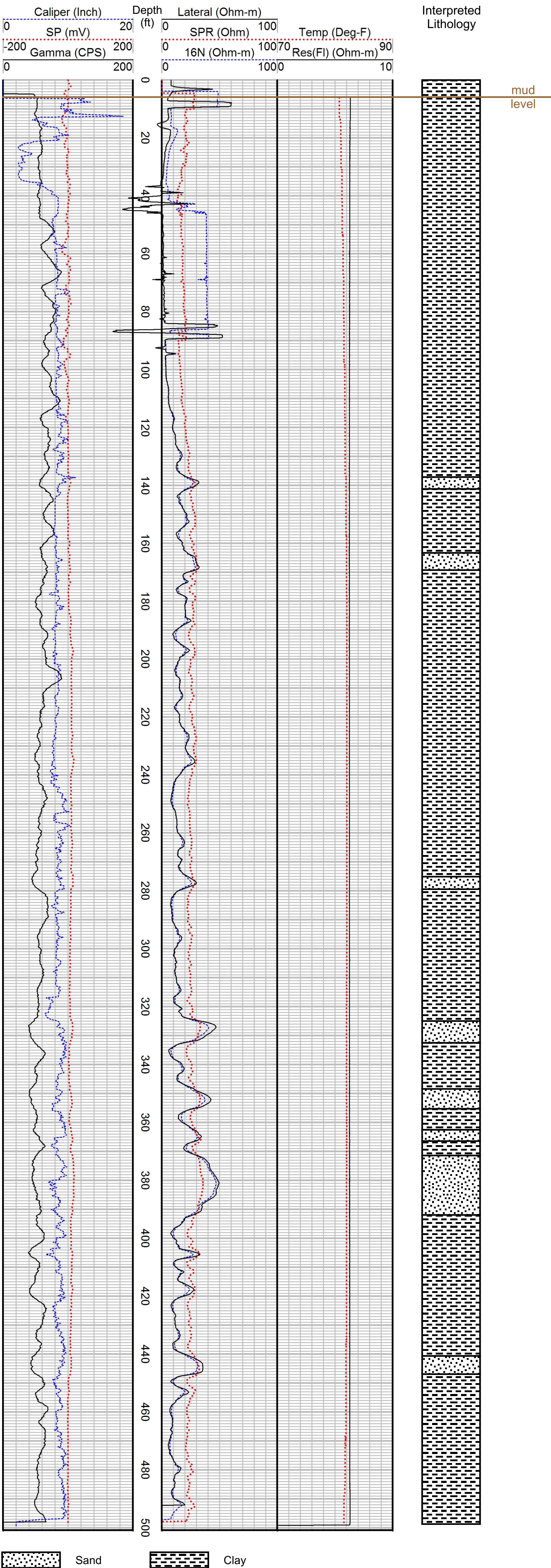




Geophysical Well Log

Gamma and E-logs

DWRi # <u>1168003M00</u> WIN <u>436052</u>	Ground Elevation <u>4592 ft</u>
Owner <u>Utah Geological Survey</u>	Log Measured from <u>Ground Level</u>
Driller <u>USGS Western Research Drilling</u>	Drilling Measured from <u>Ground Level</u>
Location <u>Deseret</u>	Total Depth <u>503 ft</u>
County <u>Millard</u> State <u>Utah</u>	Depth to Water <u>N/A</u>
	Drilling Fluid <u>Bentonite</u>
Location (DWRi) <u>S 180 ft, W 547 ft from NE corner, Sec. 09, T18S, R7W, SLBM</u>	Casing Type Dia. From To
Location (GPS) UTM: X= 358865m, Y= 4348218m, Zone 12N, NAD83 S 128 ft, W 551 ft from NE corner, Sec. 09, T18S, R7W, SLBM	
Date <u>2 Aug 2012</u> Time <u>5:30 pm</u>	Comments <u>UGS Well PA-3</u>
Geologist <u>Kevin Thomas</u>	Logged by <u>Mendenhall of USGS</u>
	Additional Geophysical Logs <u>Sonic</u>



Although this product represents the work of professional scientists, the Utah Department of Natural Resources, Utah Geological Survey makes no warranty, expressed or implied, regarding its suitability for a particular use. The Utah Department of Natural Resources, Utah Geological Survey, shall not be liable under any circumstances for any direct, indirect, special, incidental, or consequential damages with respect to claims by users of this product.