



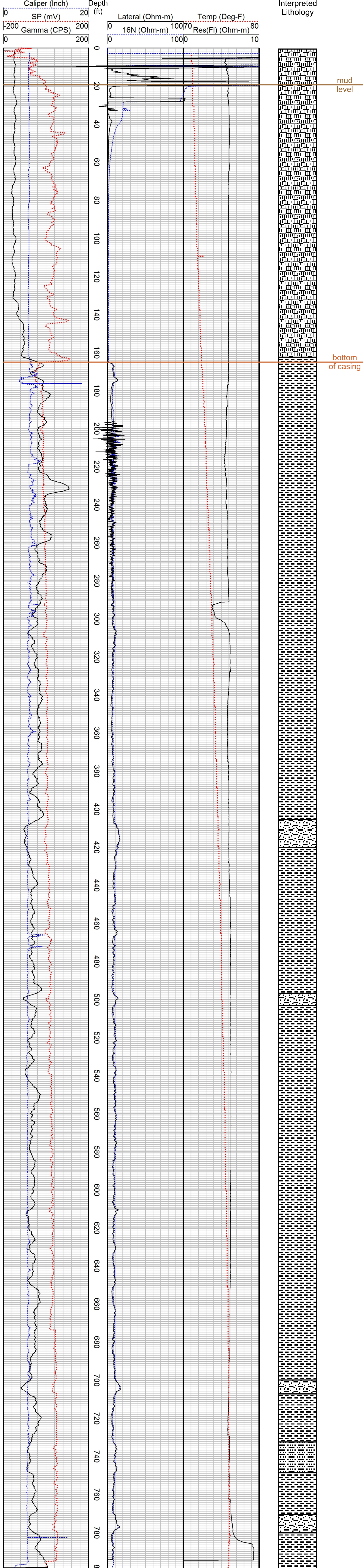
Geophysical Well Log

Gamma and E-logs

DWRi #	1167001M00	WIN	434639	Ground Elevation	4670 ft
Owner	Utah Geological Survey			Log Measured from	Ground Level
Driller	USGS Western Research Drilling			Drilling Measured from	Ground Level
Location	Pavant Butte			Total Depth	806 ft
County	Millard	State	Utah	Depth to Water	N/A
				Drilling Fluid	Bentonite

Location (DWRi)	N 1226 ft, E 472 ft from SW corner, Sec. 32, T20S, R6W, SLBM	Casing Type	Steel	Dia.	12 in	From	+2 ft	To	165 ft
Location (GPS)	UTM: X= 365963m, Y= 4321704m, Zone 12N, NAD83 S 1436 ft, E 524 ft from N/4 corner, Sec. 32, T20S, R6W, SLBM								

Date	24 April 2011	Time	12:00 pm	Comments	UGS Well P-2A	Additional Geophysical Logs	Sonic
Geologist	Kevin Thomas			Logged by	Mendenhall of USGS		



	Basalt		Clay		Silty Sand
	Silty Clay				

Although this product represents the work of professional scientists, the Utah Department of Natural Resources, Utah Geological Survey makes no warranty, expressed or implied, regarding its suitability for a particular use. The Utah Department of Natural Resources, Utah Geological Survey, shall not be liable under any circumstances for any direct, indirect, special, incidental, or consequential damages with respect to claims by users of this product.