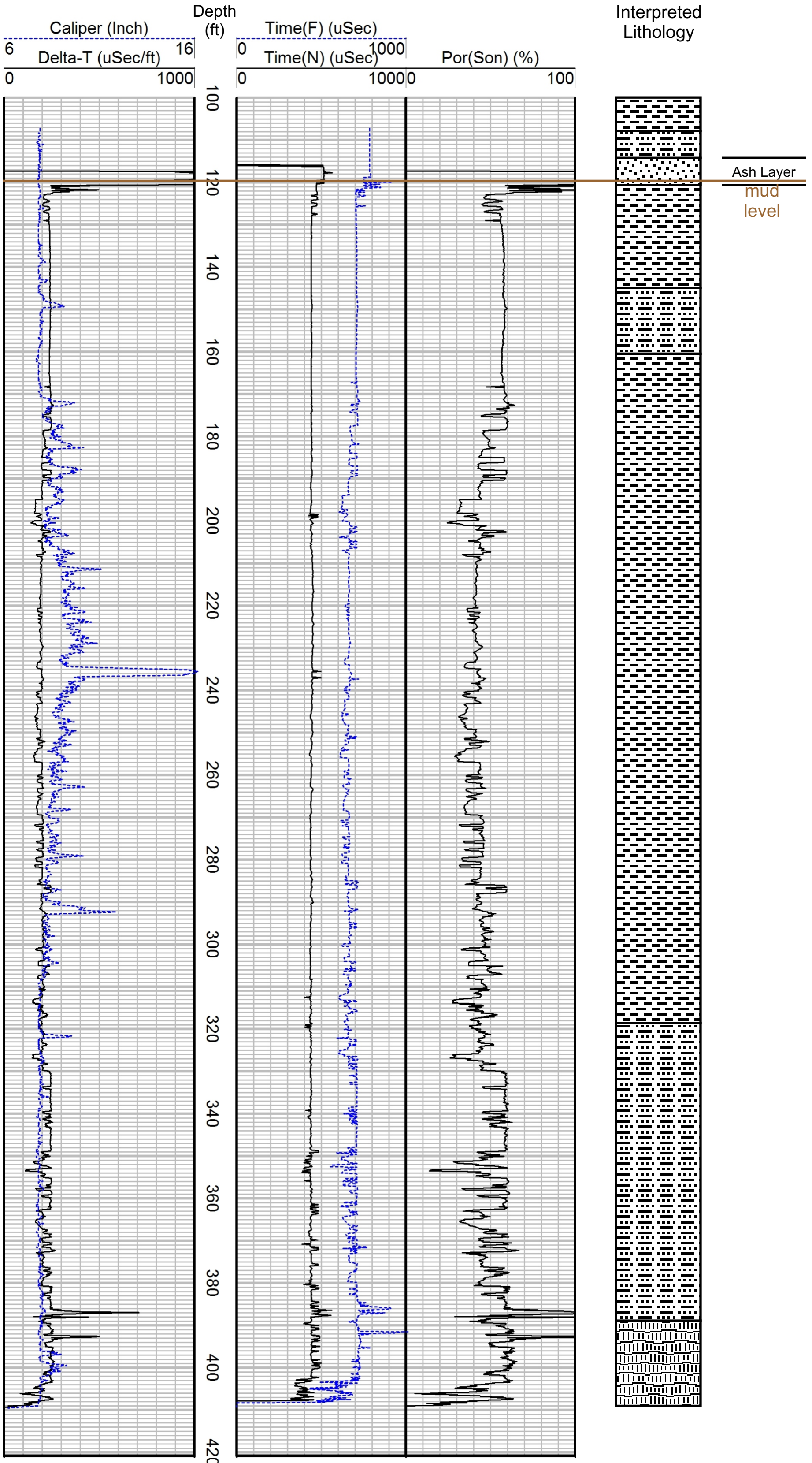




Geophysical Well Log

Sonic Log

DWRi #	1213004M00	WIN	436282	Ground Elevation	4436 ft
Owner	Utah Geological Survey			Log Measured from	Ground Level
Driller	USGS Western Research Drilling			Drilling Measured from	Ground Level
Location	Matlin Mountains			Total Depth	410 ft
County	Box Elder	State	Utah	Depth to Water	N/A
				Drilling Fluid	Bentonite
Location (DWRi) N 1102 ft, W 64 ft from E4 corner, Sec 32, T10N, R12W, SLBM				Casing Type Dia. From To	
Location (GPS)UTM: X=313807m, Y= 4602412m, NAD83, Zone 12N N 1144 ft, W 622 ft from E4 corner, Sec 32, T10N, R12W, SLBM					
Date	21 Nov 2012	Time	3:15 pm	Comments	
Geologist			Kevin Thomas	UGS Well Matlin-1	
				Additional Geophysical Logs Gamma & E-Log	



 Clay
  Sandy Clay
  Basalt

Although this product represents the work of professional scientists, the Utah Department of Natural Resources, Utah Geological Survey makes no warranty, expressed or implied, regarding its suitability for a particular use. The Utah Department of Natural Resources, Utah Geological Survey, shall not be liable under any circumstances for any direct, indirect, special, incidental, or consequential damages with respect to claims by users of this product.