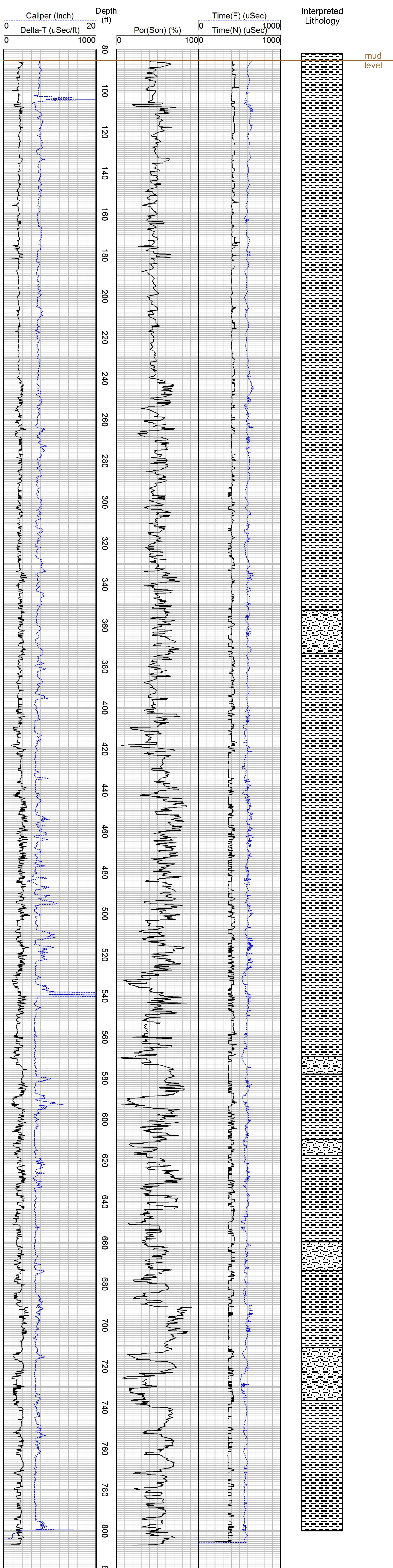


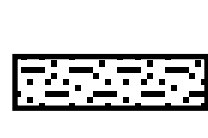
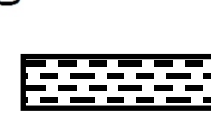


# Geophysical Well Log

## Sonic Log

DWRi # <u>1168001M00</u> WIN <u>434637</u>	Ground Elevation <u>4592 ft</u>
Owner <u>Utah Geological Survey</u>	Log Measured from <u>Ground Level</u>
Driller <u>USGS Western Research Drilling</u>	Drilling Measured from <u>Ground Level</u>
Location <u>Crater Springs</u>	Total Depth <u>805 ft</u>
County <u>Juab</u> State <u>Utah</u>	Depth to Water <u>N/A</u>
	Drilling Fluid <u>Bentonite</u>
Location (DWRi) S 450 ft, W127 ft from N/4 corner, Sec. 32, T14S, R8W, SLBM	Casing Type   Dia.   From   To
Location (GPS) UTM: X= 347844m, Y= 4381037m, Zone 12N, NAD83 S 567 ft, W 30 ft from N/4 corner, Sec. 32, T14S, R8W, SLBM	
Date <u>8 April 2011</u> Time <u>2:00 pm</u>	Comments <u>UGS Well CS-4</u>
Geologist <u>Kevin Thomas</u>	Logged by <u>Mendenhall of USGS</u>
	Additional Geophysical Logs <u>Gamma &amp; E-logs</u>



 Silty Sand
  Clay

Although this product represents the work of professional scientists, the Utah Department of Natural Resources, Utah Geological Survey makes no warranty, expressed or implied, regarding its suitability for a particular use. The Utah Department of Natural Resources, Utah Geological Survey, shall not be liable under any circumstances for any direct, indirect, special, incidental, or consequential damages with respect to claims by users of this product.