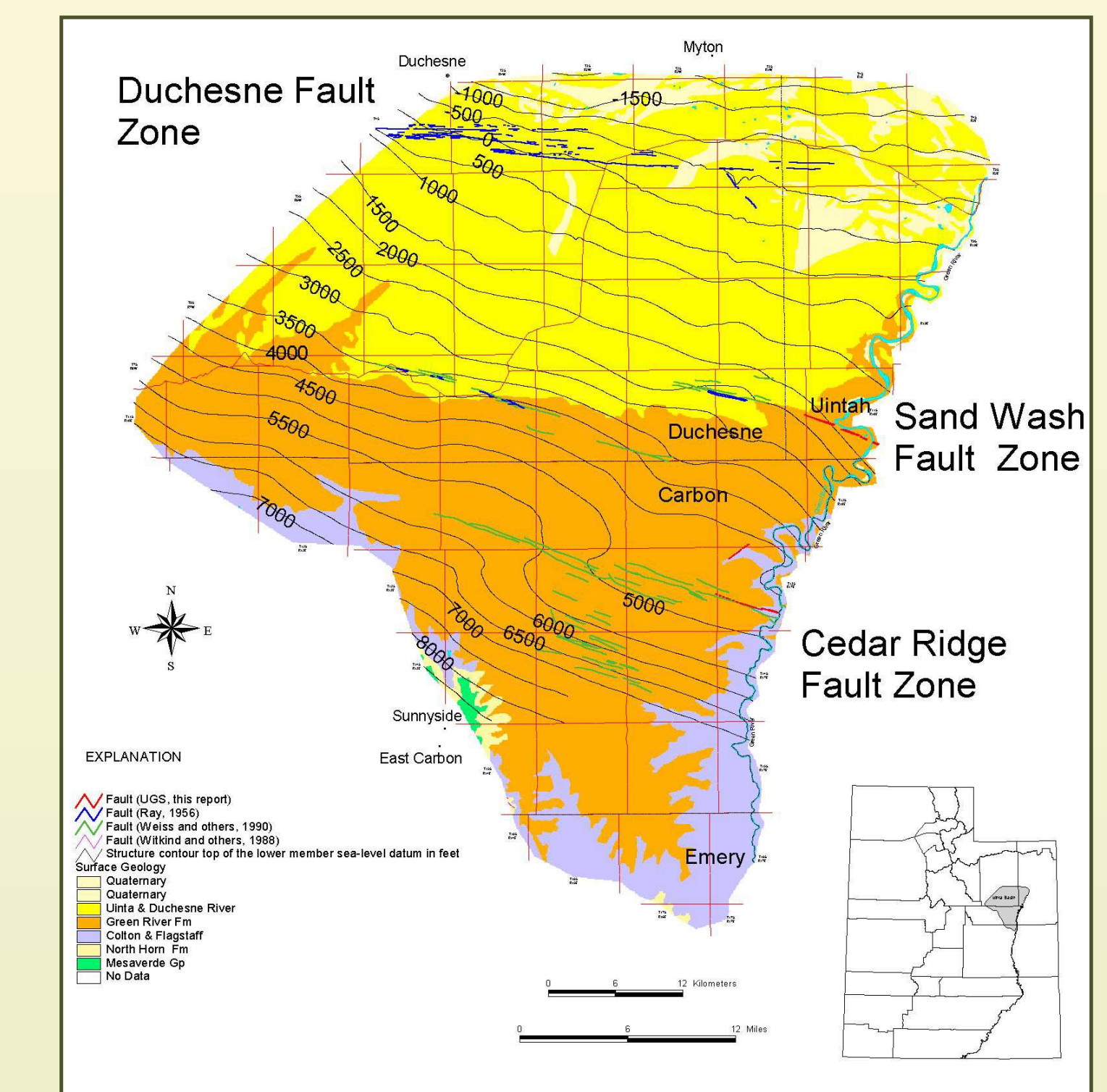


# Cedar Ridge Fault Zone

## Characteristics of the Cedar Ridge Fault Zone

Typically numerous parallel faults  
 Varying displacement from less than a meter to greater than 40 meters  
 Width of deformation is often wide compared to relative vertical displacement  
 May have significant oblique-slip movement on the major faults within the system  
 Faults do not appear to be stratigraphically bound although all exposed fault traces are below the Mahogany oil shale

Index Map



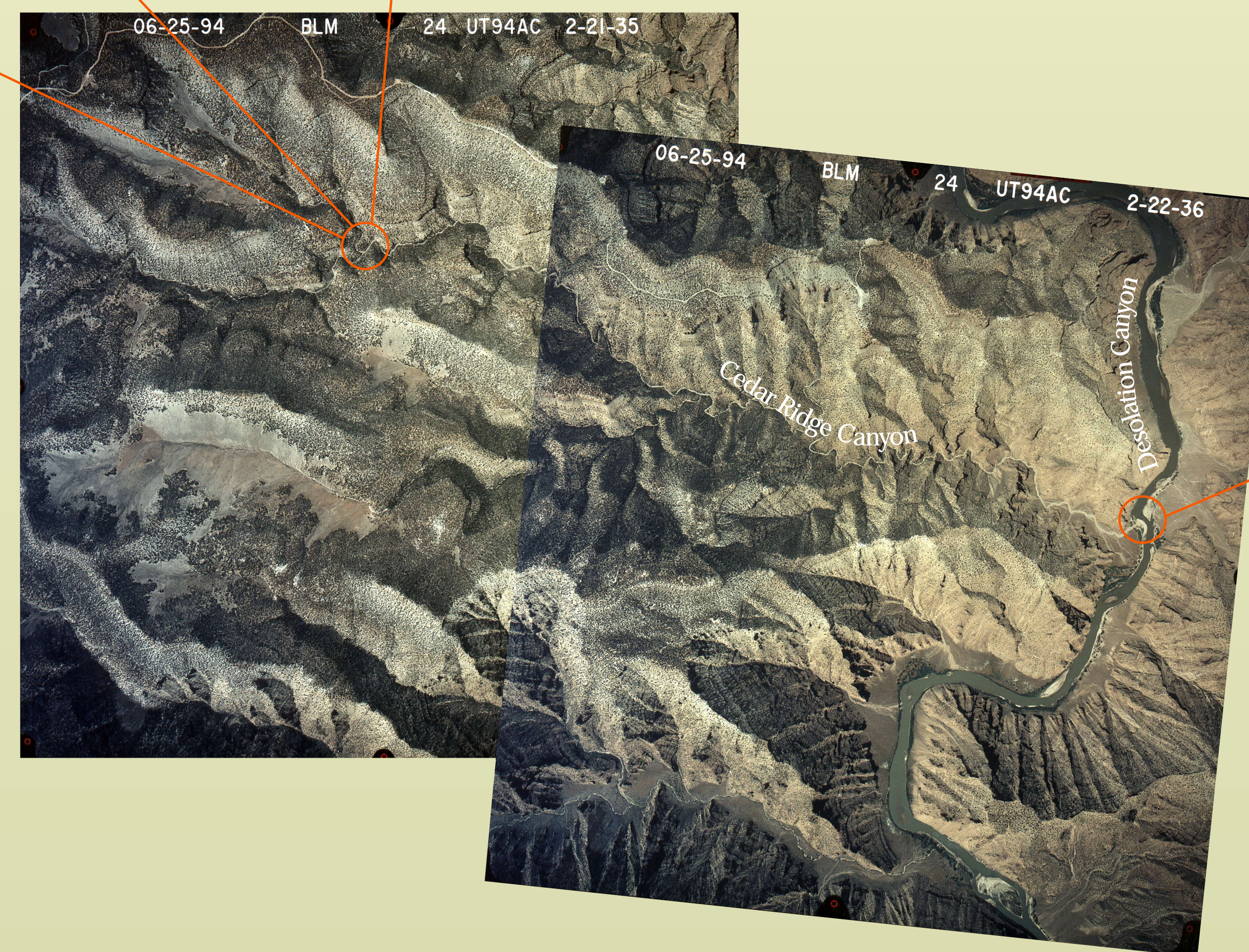
Master fault in Cedar Ridge Canyon with 40+ meters of displacement.



Several minor faults paralleling the master fault.



Close up of a few of the minor faults



Air photo of Cedar Ridge Canyon, tributary to Desolation Canyon of the Green River.



Faults exposed at the junction of Cedar Ridge and Desolation Canyons.