

Outcrop Analog



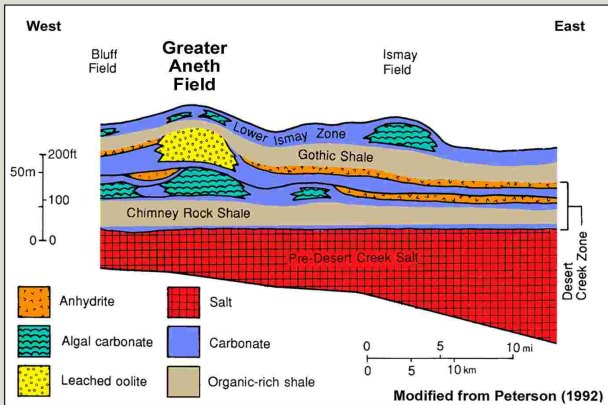
Desert Creek Phylloid-Algal Mound, San Juan River, Utah

Modern Analog

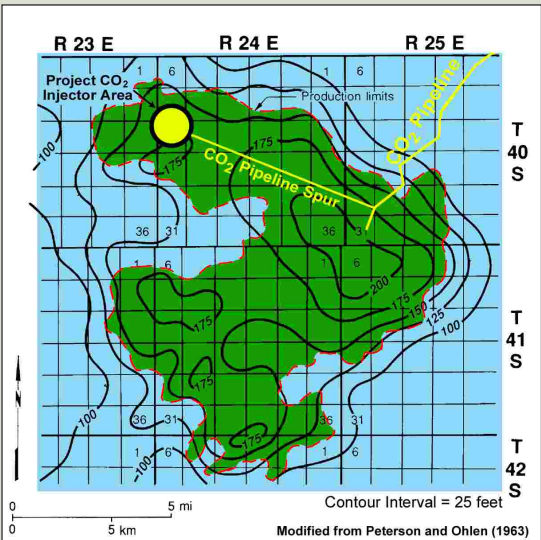


Horseshoe Atoll, Androse Island, Bahamas

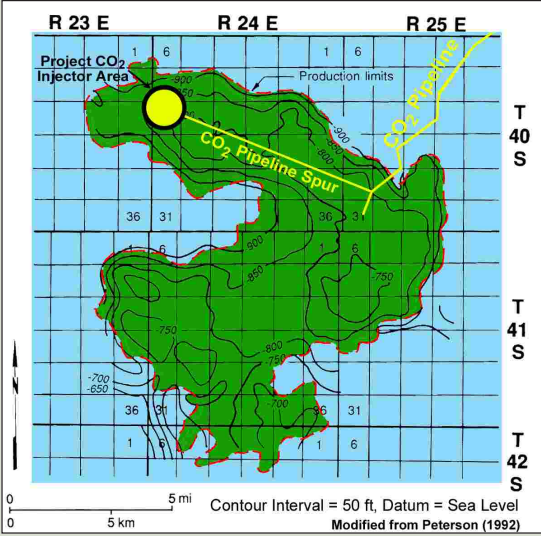
Diagrammatic Lithofacies Cross Section



Generalized Thickness Map: Desert Creek Zone



Structure Contour Map: Top of Desert Creek Zone



Discovery Well

- Texaco #1 Navajo C
- T.D. – 5923 ft
- Completed February 6, 1956
- IPF – 568 barrels of oil per day
- Initial Pressure – 2170 psia
- GOR Gas – 3448:1

Reservoir Data

- Productive Area – 48,260 acres
- Net Pay – 50 ft
- Porosity – 10.2%
- Permeability – 10 md, range 3-30 md
- Water Saturation – 24%
- Bottom-hole Temperature – 125°F
- Type of Drive – Fluid Expansion and Solution Gas
- Lithology – Limestone (algal boundstone & oolitic-, peloidal-, & skeletal grainstone & packstone), as well as finely

Production Data and Reserves

- Cumulative Oil – 438,657,172 barrels
- Cumulative Gas – 383,544,829 mcf
- Cumulative Water – 1,400,287,469 barrels
- Active Wells – 465
- In-Place Total Reserves – 1100 million barrels
- Type of Secondary Recovery – Waterflood and CO2 Flood, Horizontal Drilling
- Monthly Oil Production – 285,000 barrels

Characteristics

Paraffinic

Dark Green

Gravity – 40-42°

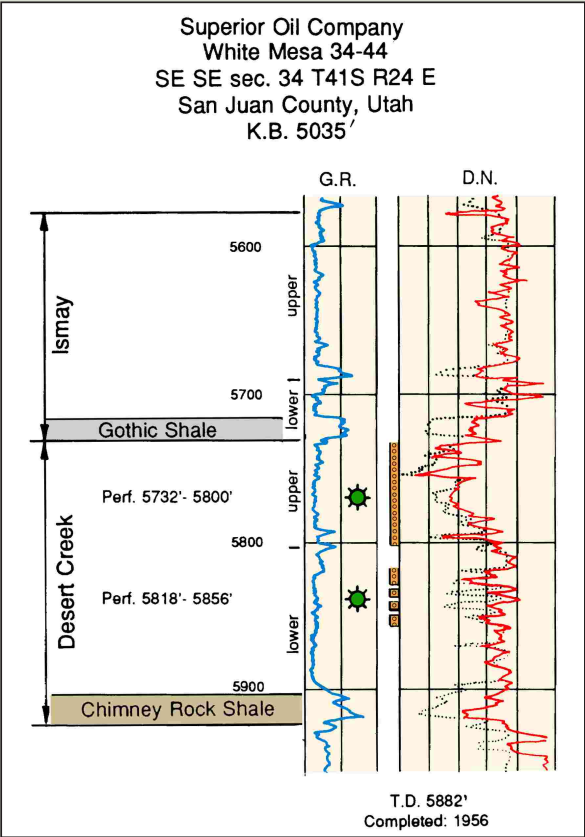
Oil

• Type –

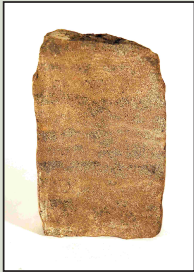
• Color –

• API

Greater Aneth Field Type Log



Upper Desert Creek Oolitic Grainstone



Pure Aneth 27-D4 Well Core 5620 ft

Lower Desert Creek Phylloid-Algal Bafflestone



Anasazi 1 Well Core 5651 ft