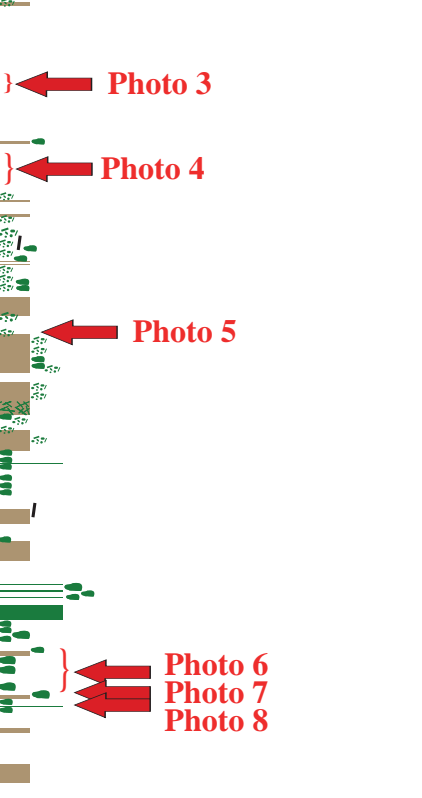
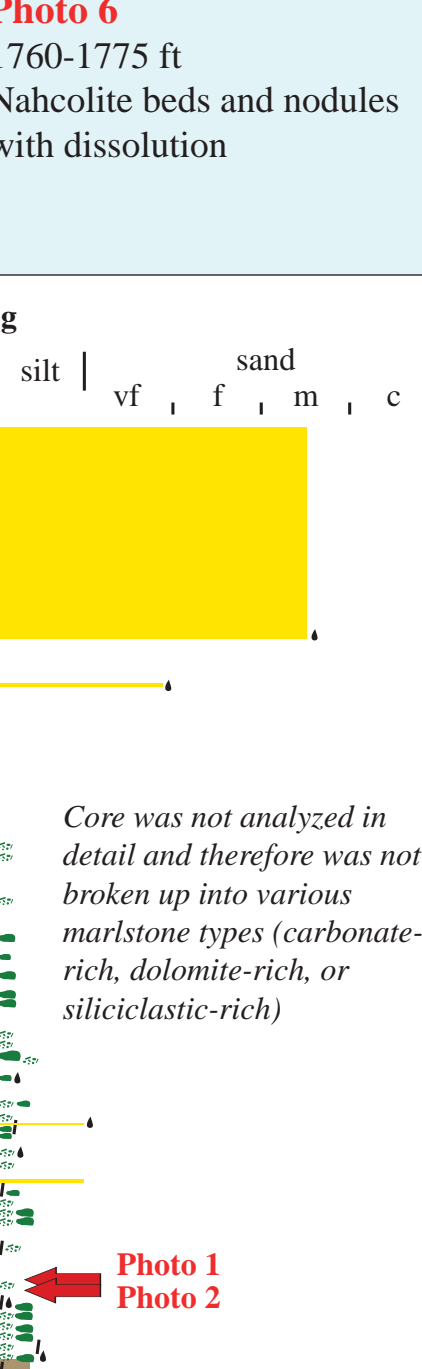
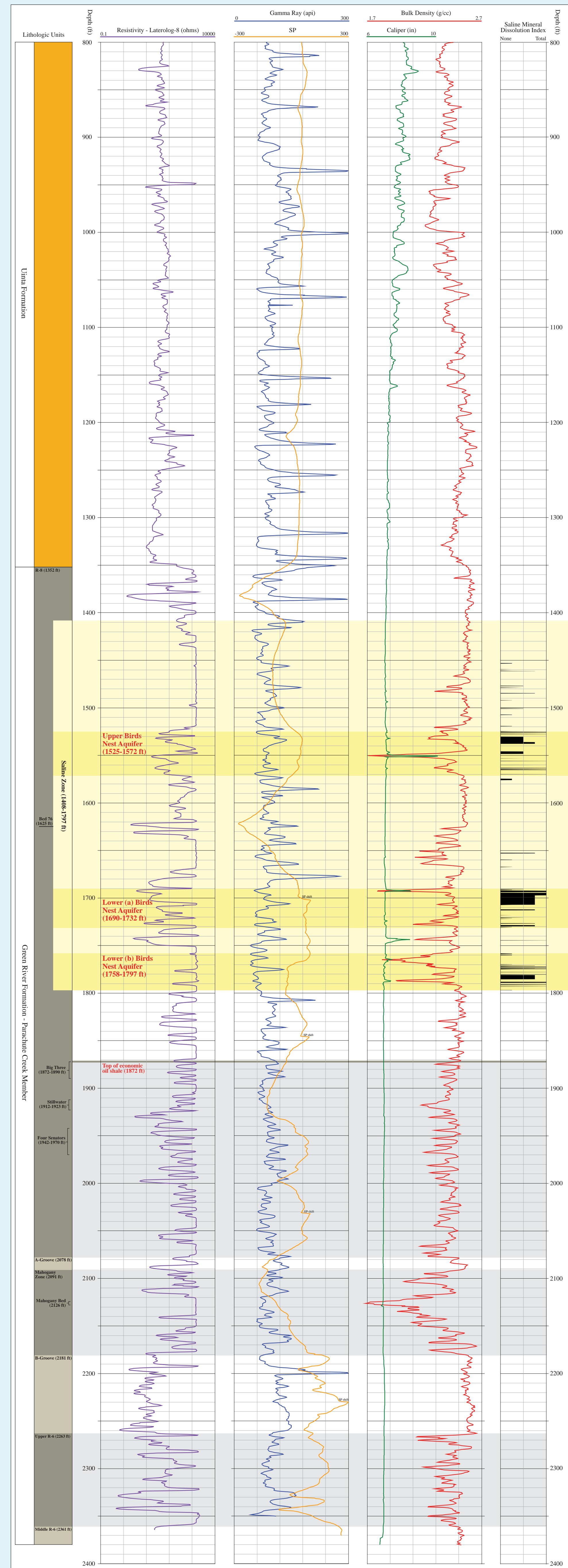


Utah State 13X-2

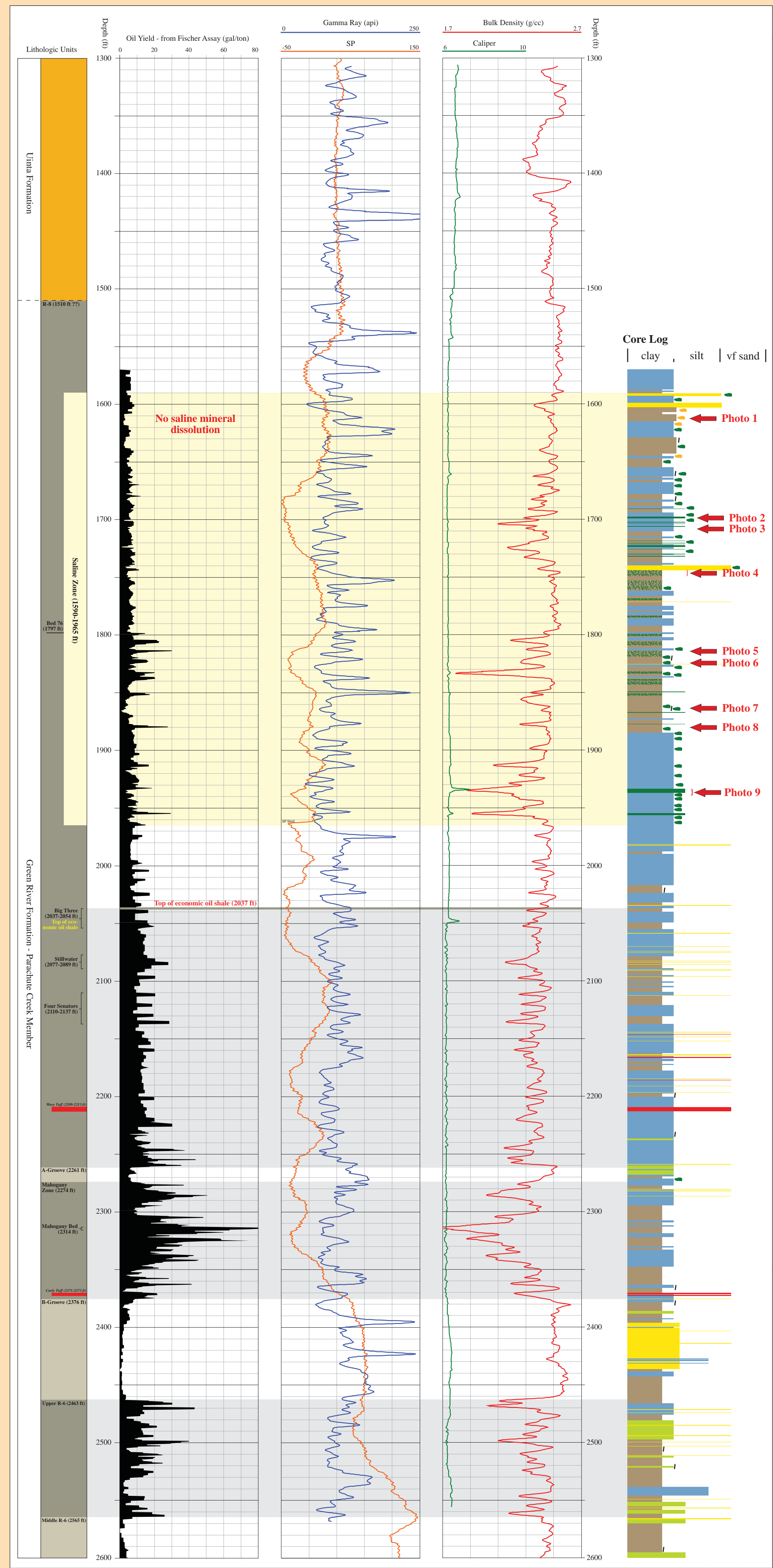
Utah State 13X-2 exhibits **extensive** saline mineral dissolution (see dissolution log) in two distinct zones, the upper aquifer is 47 feet thick (1525-1572 ft) and the lower aquifer is 107 feet thick (the lower zone could be separated into two zones, 1690-1732 ft and 1758-1797 ft). This well is very near Anadarko's saline water disposal wells.

Operator: Tosco Corp.
Location: T10S, R21E, Sec. 2, UTM E 625912, UTM N 4425960
Ground elevation: 5064 ft
Year drilled: 1977
Cored interval: 120 - 2191 ft, 3.5 inch diameter (only examined 1289-1818 ft)
Core location: Utah and USGS Core Research Center



Utah State 1

Utah State 1 exhibits **no** saline mineral dissolution throughout the entire saline zone. This well is located about 1 mile north of Anadarko's saline water disposal wells, with a prominent gilsonite vein located in between. This situation indicates that gilsonite veins may be acting as flow barriers within the Birds Nest aquifer.



Operator: Tosco Corp.
Location: T9S, R21E, Sec. 26
UTM E 627029, UTM N 4429992
Ground elevation: 4911 ft
Year drilled: 1974
Cored interval: 1570 - 2600 ft, 3.5 inch dia.
Core housed at the Utah CRC

