

Detailed Sedimentology and Stratigraphy of the Remington 21-1H Cane Creek Shale Core, Pennsylvanian Paradox Formation, Southeastern Utah: Implications for Unconventional Hydrocarbon Recovery

by Peter J. Nielsen, Craig D. Morgan, and Michael D. Vanden Berg • Utah Geological Survey, Salt Lake City, Utah

Project funded by U.S. Department of Energy–National Energy Technology Laboratory and Utah Geological Survey

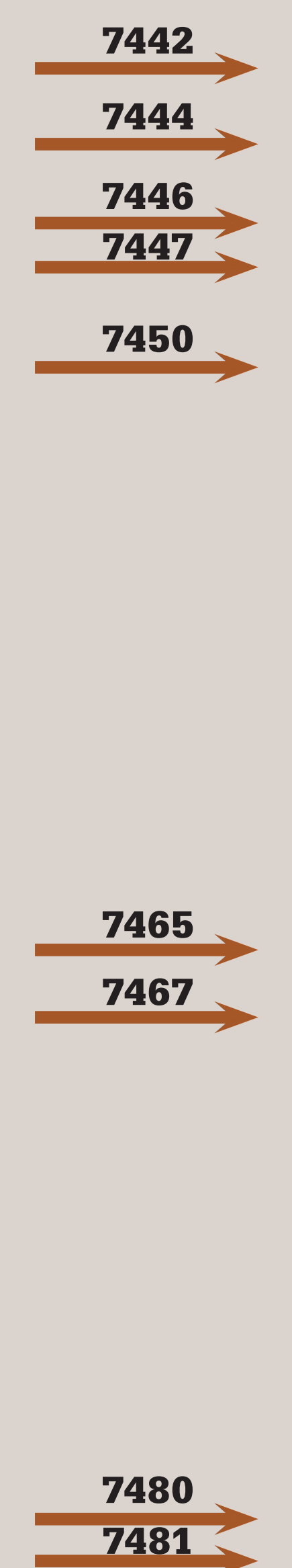
Project website: http://geology.utah.gov/emp/shale_oil

2013 AAPG–RMS • Salt Lake City, UT

Thin Section Micrographs

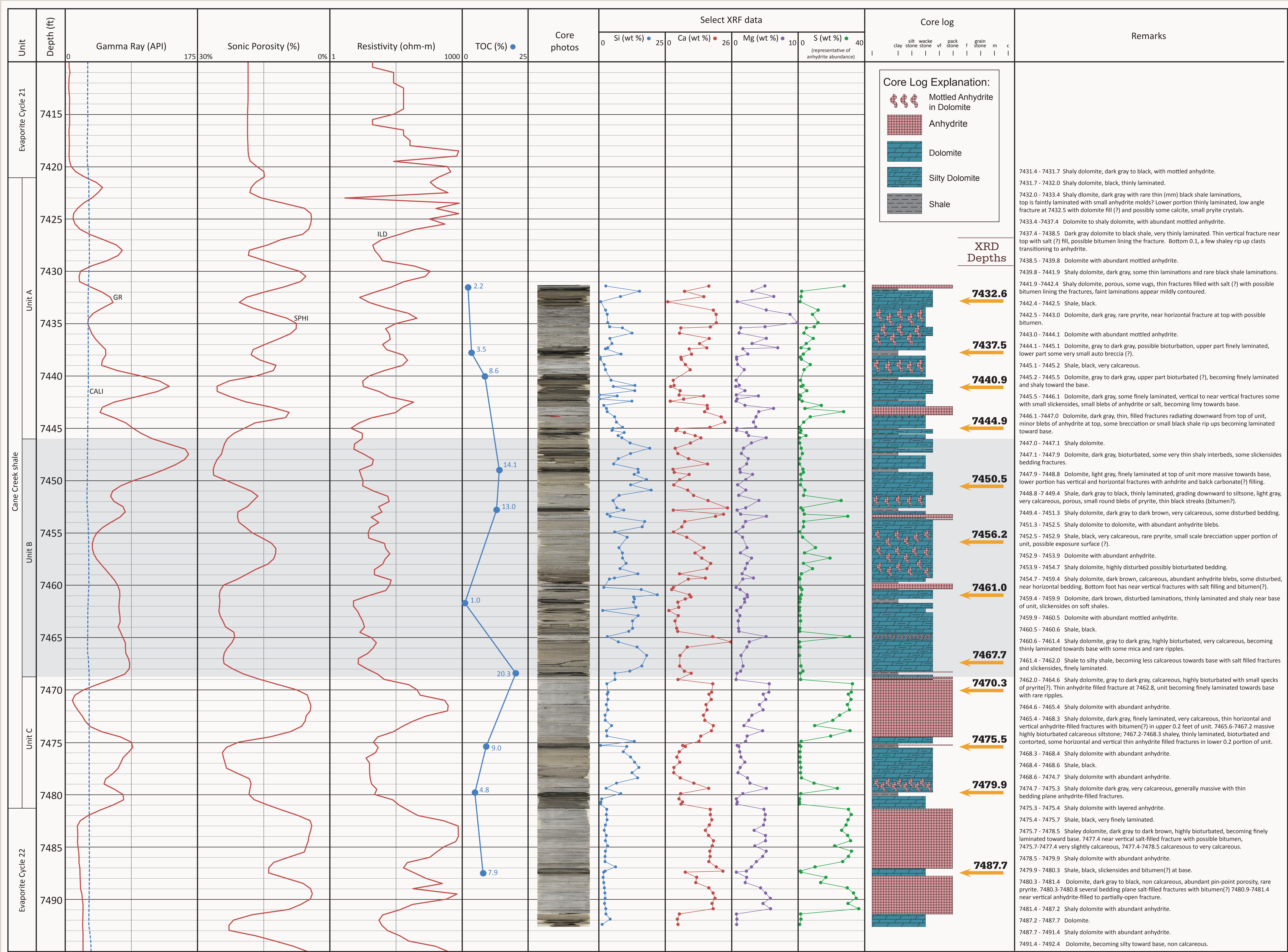


Thin Section Photo Depths



Well Name Remington 21-1H (4303731742)

Operator: Union Pacific Resources Co. • Location: T31S, R23E, Sec. 21, San Juan County, UTM E 640628, UTM N 4214975
Cored interval: 7435-7496.3 ft (core shifted up 3.6 ft to match logs) • Core Location: Utah Core Research Center



XRD Mineral Analysis

